

CALVIN COMMENTARY



JOHN CALVIN PRESBYTERIAN CHURCH

MAY / JUNE 2016

4201 TRANSCONTINENTAL DRIVE
METAIRIE, LA 70006
504.888.1375
www.johncalvinchurch.org

In This Issue

- THE STUDY WINDOW
- MUSIC CORNER
- CHRISTIAN EDUCATION
- COMMITTEE NEWS
- JCPC HISTORY
- BIRTHDAYS/EVENTS

SHOW ME

the way

I should walk

PSALM 143:8



Happy Father's Day

Direct your children onto the right path,
and when they are older, they will not leave it.

PROVERBS 22:6

From



The Study Window

The New Stained glass windows are the completion of a dream that came out of the tragedy of the fire as the congregation and building committee envisioned a new sanctuary where the congregation would continue to grow and worship as God's people. The windows are composed of ten panels that teach us and remind us through their existence and their images of the sheer wonder and magnitude of God's gracious care for us.



The first panel is an image of creation. Genesis tells us in the beginning God created the heavens and the earth. You see in the panel the hands of God spinning out the universe including the sun and planets of our solar system. You can also see fish and birds as God creates life as we know it.



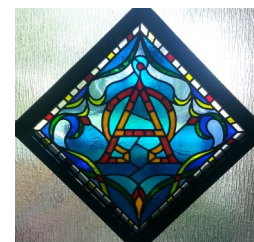
The second panel is Noah's Ark. God saw that the earth had become corrupt and acted to make things right. God commanded Noah who was a righteous man to build an ark that through the coming flood the world might have a new beginning. At the top of the panel you can see the rainbow and a dove returning to the ark with a branch indicating that it had found dry land and that the new beginning God intended was at hand.



The third panel is an image of the burning bush and the Ten Commandments. Moses is a giant in the history of Israel. At the burning bush God calls Moses away from tending his father in laws sheep and sends him back to Egypt to lead the Hebrews out of bondage which he does with God's help. Then as if freedom is not enough of a gift, during the exodus God gives Moses and people the Ten Commandments that this disorderly disobedient group of slaves might be formed into a functioning nation.



The fourth panel is an image of the twenty third psalms. Indeed the Lord is our shepherd and as a result of God's care we shall want nothing we need to function as God's servants. The panel is an idyllic picture of a stream flowing across a plain and sheep grazing all of which signify God's providential care for us. God's care for us is never failing and we can entrust ourselves to God's care in all circumstances.



The fifth panel is the alpha and Omega, the first and last letters of the Greek alphabet respectively. These letters are a reminder that God is the beginning and end of all things. God has established creation and God will fulfill God's purposes for creation and we are privileged to be part of that work.



The sixth panel is the manger scene. Christ our Lord the Son of God Almighty the creator of the universe entered our world as the babe in the manger at Bethlehem. In the panel you can see Mary and Joseph and the shepherds gazing in wonder at the babe in manger as the stars shine their light upon the holy scene.



The seventh panel is a shell which is a symbol of baptism. Christ began his ministry among us after his baptism by John the Baptist thus giving us the sacrament of baptism. In the sacrament of baptism we are marked out and claimed as God's children. If you look closely at the Baptismal font you will notice a shell and drops of water on the front of the font such that font and the image in the window are tied together.



The eighth panel focuses on the chalice which symbolizes the sacrament of communion which our lord commanded us to observe in his memory. In the panel you can see the grain from which the bread is made and you can see the grapes from which the wine is made. In faith the bread and wine become for us the body and blood of our lord which nurtures us unto eternal life. The chalice on the table and the chalice in the window tie table and window together.



The ninth panel is the empty tomb symbolizing the resurrection of our lord Jesus Christ following his crucifixion. Jesus was arrested tried and crucified and on the third day rose from the grave. In doing so he conquered the powers of death and evil. You can see in the panel rays of light shining forth from the tomb signifying that the risen Christ is as scripture tells us the light of the world.



The tenth panel is a dove which symbolizes the gift of the Holy Spirit. On Pentecost the Holy Spirit was poured out on the disciples and the church. As a result a group of ordinary disciples were empowered to witness to the reality of Christ's life, death and resurrection in ways that resulted in the church growing into an organization that touches billions of lives.

These windows are not just the fulfillment of a dream they are a constant reminder of the reality and sheer wonder of God's presence and grace in our lives. Our prayer is that they will be a blessing to and for you each time you look upon them.

In Christ's Service

Rev. Harry Brown

THE MUSIC CORNER



By: William R. Memmott

FROM THE MUSIC CORNER

In the last Commentary we said:

"We have lost a number of singers in recent times. If you sing, consider seriously joining our ranks on Wednesdays at 7:15 p.m. Your 'stewardship of singing' will be much appreciated."

It is unfortunate that we have lost so many singers from the choir. They were dear friends and pillars of the choir loft. We miss them dearly. And seriously, from a choir master's perspective, it can be said that we are approaching a critical mass. So many losses affect the ability of the Music Corner to maintain its outstanding production of worship music and special events. For many of us this has become a serious matter of prayer. It is more than a joke that "we pray for a new bass to supplement our faithful basses." And our prayers stretch into all sections.

Now, I know that there are singers in the congregation (and in our community) who are capable of serving as replacements. I'm almost down on my knees to beg for you to come forward and commit to our Noble Cause.

Several challenges lie ahead of us:

Regular worship services;

Gathering of Choirs in October;

Joint production of "The True Story of Cinderella;"

The Christmas Concert - "The Christmas Story" from Handel's "Messiah."

These are also great fun as well as contributions to the musical life of JCPC.

Will you join us?



VACATION BIBLE SCHOOL

9:00a.m.—12noon

**“Cave Quest, Following Jesus,
The Light of the World”**

July 25-29

**3 yrs. old (potty-trained)-8 yrs. old (entering 3rd
grade)**

Registration Forms in Church Office

We are also currently signing up adult volunteers and
youth volunteers seeking service hours.

JOHN CALVIN PRESBYTERIAN CHURCH GARAGE SALE

WHEN: FRIDAY, JUNE 3RD & SATURDAY, JUNE 4TH

TIME: 8:00AM—12:00PM

WHERE: 4201 TRANSCONTINENTAL DRIVE

WANTED: GARAGE SALE ITEMS

-FELLOWSHIP HALL-

***NOW ACCEPTING ITEMS**

VOLUNTEERS NEEDED:

- >SET-UP CREW (TABLES & ITEMS)**
- >CASHIERS, ORGANIZERS & PRICERS**
- >CLEAN-UP CREW (TAKE DOWN TABLES &
HELP GET ITEMS NOT SOLD DELIVERED TO
RIDGE HOUSE)**

CONTACT: SUE CRAWFORD

(504-888-1375)

SPONSORED BY: JCPC YOUTH & CE COMMITTEE

WHAT'S HAPPENING IN CHRISTIAN-ED?

CHRISTIAN EDUCATION NEWS

Thank you to all who participated in the Youth Sunday Worship service on May 22! It was a beautiful service and received many accolades from the congregation. We are all so proud of our youth and the dedication and commitment from each and every one of you! Outstanding! Let's plan another service...



Youth Service Held on May 22, 2016

CONNER BOUDREAUX	JOSHUA BUSH
KATE CORCORAN	LAYNE CORCORAN
ETHAN ETLAND	BRIAN FISH
LAUREN FISH	TRAVIS FISH
PENELOPE FOX	MATTHEW FREUDENTHAL
CALEB HEBERT	CHRISTIAN HEBERT
SOFIA HILL	EVA MACE
MEGAN LAULAND	MIA LAULAND
BROCK MOORE	MADELINE CECILE RICH
PORTIA ROBINSON	DAVID RUSSO
JONATHAN ZEA	SABASTIAN ZEA



CONGRATULATIONS EVA MACE



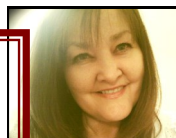
Eva Mace was named as Mt. Carmel's 2016 salutatorian. She is a member of the National Honor Society, National Latin Society, and Mu Alpha Theta. Eva will be attending LSU this fall studying Pre-Med.

It is with great sadness that we received the resignation of Ms. Laurie Robinson as Youth Christian Education Director. While we are sad for ourselves, we are happy for Laurie and the way she is extending her career boundaries.

Laurie joined the John Calvin Presbyterian Church staff in 2010 and has been a valuable part of our staff. She is a very kind, outgoing and caring woman and we will truly miss seeing her smiling face on a daily basis. The good news is that she isn't leaving us completely. Laurie and her delightful daughter, Portia, will remain active members of our church.

Let us prayerfully wish Laurie the very best and the greatest success in her future endeavors.

Rev. Harry Brown



To my John Calvin family,

I would like to extend my sincerest thanks and gratitude for all of your help, support and compassionate kindness over the last several years. I consider my time here a highlight in my career journey and have cherished serving with all of you. I could not have accomplished anything without the willingness of eager volunteers, friends and family. Thank you for your valuable time and your immense talents which I will always treasure. I will continue to worship with you on Sundays and hold you in my prayers. God bless.

Laurie Robinson

Program of Hope

We would like to thank all of those who helped in the preparation and distribution of lunches to the homeless of New Orleans. Your volunteers made and distributed 110 sandwiches or lunches each Wednesday in the month of May. It is such a joy to meet and help those in need in our area.

We are scheduled to participate again during the month of October. We are pleased, once again, to report that your special offerings will cover the expenses for our lunch supplies for both May and October. Thank you.

Although our participation at First Presbyterian does not resume until September, we will continuously be receiving your generous donations of clothing, toiletries, etc., which we transmit periodically to First Presbyterian. At this time, we continue – especially - to need men's clothing (summer/spring) and shoes.

Your volunteers: ***Lorraine Hicks, Barbara McHan, Barbara Taylor, George McLean, Gus Mullins, Evelyn Toby, Jon O'Regan Julie Etland, Henry Wagner, Sandy Cranfill, Richard Britson, Dennis Lauland, Nancy Davis, Richard Ashmore, Sharon Fortin, Joe Palermo, Barbara Remelts, Ann Trapani, Linda Lowry, Sue Crawford, and Carolyn Calvin.***



Bite the Tail off of Homelessness!

You may have missed it, but much fun was had at a Crawfish Boil held by Lakeview Presbyterian Church, recently. This is the annual fundraiser that Lakeview holds in support of Program of Hope, similar to the White Elephant Sale was started in 2014, and the musical production we are hoping to start this year.

Lakeview Presbyterian Church and the Lakeview Civic Improvement Association have been holding their annual Crawfish Boil for the past 6 years, raising something on the order of \$3000 for Program of Hope. The title is great! Bite the Tail off of Homelessness! Who wouldn't want to participate?!

We were lucky that a chance encounter between Sandy Cranfill and a member of Lakeview Presbyterian during the Program of Hope lunch distribution the first week in May resulted in 20 tickets available to John Calvin. We had little time for publicity. A "Minute for Mission" or two and mentions in several meetings allowed us to sell 11 tickets...pretty good for a last minute opportunity!

The bunch of us that participated had a great time and made a good showing for John Calvin Presbyterian Church. We are all in this together!

May 2016

50 years ago... did you know?



Fifty years ago, John Calvin Presbyterian Church was constituted, but we didn't call our first pastor until 1967...

As what would become JCPC was just getting started, the Presbytery borrowed Rev. Jack Moore from the Texas Presbytery where, having excellent organizing skills, he worked to start new churches by gathering interested people in the community and leading them through the early stages of church growth. Rev. Moore served 4 months to be followed by the Presbytery Executive, Dr. Russell T. Nunan (a retired U.S. Navy Chaplain who served in WWII), who led services in the trailer until the Pastor Nominating Committee (PNC) was formed and the first pastor was called.

Rev. Robert E. (Bob) Malsbary was called by the first PNC and installed on April 30, 1967. Rev. Malsbary had been pastor of First Presbyterian Church, Andalusia, Alabama for the previous 6 years, just out of Columbia Theological Seminary. Unusually, Rev. Malsbary stayed on at JCPC for 33 years, until his retirement in August 2000. What a wonderful opportunity for this young church and its new pastor. We will discuss much of the accomplishments of those 33 years in subsequent articles. Rev. Malsbary was a beloved pastor, highly esteemed by his congregation. His retirement closed the first chapter of the life of JCPC.

Just a few months after Rev. Malsbary's retirement, and before a new PNC was even elected, JCPC experienced an arson fire that destroyed the sanctuary, offices, and several classrooms. What a testament to the congregation that they drew together and kept their church going, but that is a story for another day. Several months after the fire, Rev. Michael B. Mann came in as the permanent interim pastor to help the congregation through the process of assessing its strengths and needs and to develop a guide for future mission in the community. Rev. Mann served for the 18 months allowed then was followed by a temporary interim pastor, Rev. Oliver T. Lee.

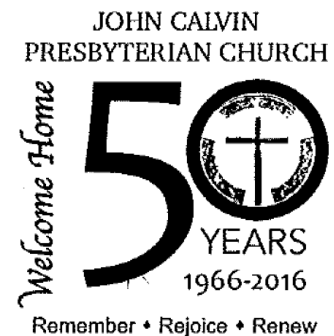
In the spring of 2002, the new PNC was nominated and began working to call a new permanent pastor. In April 2003, the congregation called Rev. Harry A. Brown to be JCPC's new pastor. Arriving from York, Nebraska in July, Rev. Brown delivered his first sermon at JCPC on July 6, 2003, thus starting another chapter in the life of JCPC. How lucky this church has been to have two such wonderful pastors in 50 years!

But when did the playschool appear? And you still haven't heard much about the trailer! Stay tuned for next month's installment on the history of John Calvin Presbyterian Church as we celebrate 50 years serving Christ and this community.

June 2016

50 years ago... did you know?

Fifty years ago, the first Worship Service on the property of John Calvin Presbyterian Church was held on Palm Sunday, April 3, 1966...in a doublewide trailer!



As John Calvin Presbyterian Church was getting started, the fledgling congregation met for Worship at the Bissonet-Maned Downs clubhouse. The group grew and Presbytery installed a specially designed doublewide trailer where the first service was held on the property on Palm Sunday, 1966. According to notes from the period, this special trailer had two detachable pieces that when set up, had the sides that came down to triple the floor space, creating seating for 100 people in folding chairs...sitting very close to one another!

The growing church quickly ran out of space in the trailer and plans were made for the first building, which would include sanctuary, classroom, and office space. The new building was completed in 1970.

Soon after completion of the first building, the Playschool was started and grew. At the same time, mission to the local community grew through support for Alcoholics Anonymous meetings. These two very different and very important needs were supplied through the use of the same 4 classrooms. The need for more space was clear and plans were made for more rooms. The Christian Education Building was completed in 1973. At this point the buildings that housed John Calvin Presbyterian Church were settled for a few years.

Did you know that the first sanctuary was never intended to be the permanent Worship space? That's what the records indicate. In the 80's the semi-permanent nature of the sanctuary was realized and plans were drawn up for a new sanctuary, office space, and better community space. Unfortunately, with the downturn of the oil industry, these plans had to be set aside. It wasn't until the late 90's when they were brought back out. "Legacy 2000" was the name for a two-phased approach to revitalization of the John Calvin Presbyterian Church buildings. Ground was broken for the phase 1, a multi-purpose building, in 1998. This is what we call our Fellowship Hall today, with classrooms, an industrially equipped kitchen, and more space for the Playschool.

You know what happened in late November 2000 – an arson fire destroyed the sanctuary, offices and the original classrooms. That is a story for another issue. Fortunately, plans for phase 2 could be resurrected and the new sanctuary, new office space and a wonderful community space, everything appreciated today, was dedicated on November 10, 2002. A new pipe organ, replacing the one destroyed in the fire, was dedicated in 2003.

Finally, as part of our 50th Year Celebration, new stained glass window inserts in the side windows were installed and dedicated on April 17, 2016. Our church is growing still!

But what about the Playschool? And, how did we survive the fire?!? Stay tuned for next month's installment on the history of John Calvin Presbyterian Church as we celebrate 50 years serving Christ and this community.



MAY BIRTHDAYS

Kathryn Melchert	May 2nd	Ashley Marler	May 5th
Dianne Boan	May 6th	David Russo	May 12th
George Cowand	May 14th	Melvyn Fourmaux	May 17th
Laura Thomas	May 20th	Don Melchert	May 29th
Bob Wooderson	May 31st	Dr. Arnold Zea	May 31st

JUNE BIRTHDAYS

Jonathan Zea	June 1st	Cindy Freudenthal	June 2nd
Sarah Springler	June 4th	Connie Casey	June 9th
Mary Lou Janoe	June 9th	William Malone Fernandez	June 11th
Kai Magri	June 12th	Paul Palermo	June 13th
Greg Freudenthal	June 16th	Dennis Price	June 17th
Jane Malsbary	June 18th	Freddie Marler	June 18th
Brock King Moore	June 18th	Sabastian Trail Zea	June 24th
Kelly Trail Zeal	June 25th	Ann Miller	June 30th



Welcome

We would like to introduce John Calvin Presbyterian Church's new Office Administrator, Eleanor Henneman.

Eleanor is from Alexandria, LA, yet has lived most of her life in Metairie. She graduated from LSU and has 20+ years work experience in Human Resources and Office Management.

Eleanor is married to her high school sweetheart, Christopher, who runs his own graphic design firm, Henneman Design. They have two wonderful daughters. *Morgan*, an aspiring Chef, is married to Aaron James and is expecting their first child in the fall. *Taylor*, a graduate from University of Louisiana Lafayette, has a degree in Biology and is continuing her education for her PA degree.

Eleanor will be a great addition to John Calvin. Not only does she look forward to working again in a Christian atmosphere, but she also has a strong understanding of the inner workings of a church.